



Automotive Aftermarket Division

3M™ 05888 Instant Plastic Repair Patch 3M™ 06396 Patch Adhesion Promoter (Wipes)

1) Part Numbers

05888 Box of 3 Patches with 6 sachets of
06396 (Part of 05888 or separately to be obtained in packs of 25)

2) Description and end uses

3M™ Instant Plastic Repair Patch is a 200mm x 100mm thermoplastic patch, backing laminated with 3M™ high performance acrylic foam tape.

3M™ Instant Plastic Repair Patch is used to easily repair damaged plastic parts, whereas the repair requires backside reinforcement (i.e. holes or cracks).

Used in conjunction with 06396 Patch Adhesion Promoter, it offers an immediate adhesion on most plastics, allowing a fast and easy reinforcement of the back of the repair. The repair of the front can follow directly without wait, using the 3M™ plastic repair materials.

3M™ Instant Plastic Repair Patch is complementary to the range of 3M™ plastic repair materials and fillers.

3) Physical Properties

3M™ 05888 Instant Plastic Repair Patch

| | |
|----------------------------|---|
| Base | TPO plastic backing laminated on high performance acrylic foam tape |
| Consistency | Flexible plastic |
| Colour | Black |
| Solids content (typical) | 100 % |
| Temperature resistance | -10°C to +85°C |
| Temperature of application | +15°C to +35°C |
| Storage conditions | +5°C to +35°C. |
| Shelf life | No shelf life |

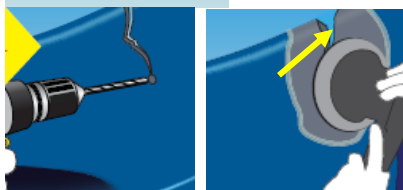
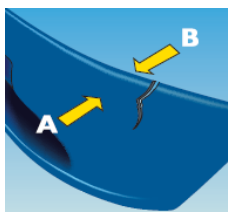
3M™ 06396 Patch Adhesion Promoter

| | |
|----------------------------|---|
| Base | Wet wipe, promoter itself is a colourless liquid, solvent based |
| Temperature of application | +15°C to +35°C |
| Storage conditions | +5°C to +35°C. |
| Shelf life | 36 months from date of manufacture (see sachet) |

- Ready to use repair system: easy application, no product mixing and spreading.
- High Performance acrylic foam tape: immediate and durable adhesion on most plastics when used in conjunction with 3M™ 06396 Patch Adhesion Promoter.
- Strong and flexible TPO plastic backing: easy to apply even on curved shapes and in corners. Can be heated to help shaping.
- No cure time after application: saves time in the repair process, 3M™ plastic repair material or filler can be applied on the front side of the repair immediately after patch application.
- Thin patch with black surface: produces a clean and nice appearance of the repair. Will not interfere with other parts of the repair area.

4) Directions for Use

This procedure is for repair of tears, cracks, holes and all other damages requiring front and backside reinforced repairs on automotive plastic parts like bumpers. Following example is for a crack repair.

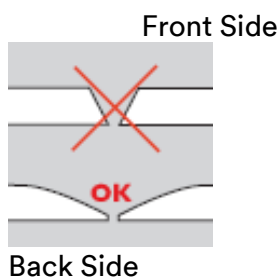


1. Clean part

- Remove part from the vehicle.
- Clean front (A) and backside (B) with high pressure washer or water and soap.
- Allow to dry.

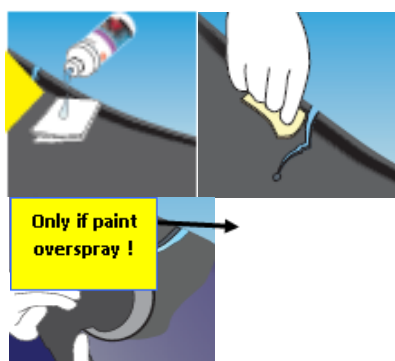
2. Prepare repair area

- Drill a 4 to 6 mm hole at the end of the crack to release stress and prevent from further crack extension.
- If crack reach the edge of the part, grind a V-notch at the edge of the crack (see arrow) to avoid crack propagation later in the process.
- Sand front side (P80 - P180) to remove all paint around the repair area.



3. Prepare crack area

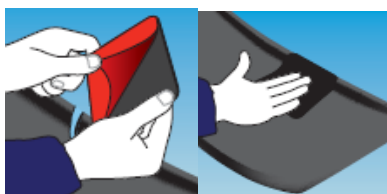
- Dish out the front side of the crack area to maximize bonding surface and achieve optimum repair resistance.
- Avoid heating and melting the plastic during sanding. Remove traces of melted plastic with a knife or thinner sanding.
- Avoid making sharp edges (see drawing) that may cause the repair to remain visible after painting.
- Blow off the repair area using clean, non-oiled compressed air.



4. Inside preparation – Adhesion promoter application

- Clean both side with 3M™ 22779 VHB™ Surface Cleaner or 3M™ 08984 cleaner.
- Wipe the repair area on the back of the part where the patch will be placed with 3M™ 06396 Patch Adhesion Promoter.
- Allow to dry for 5 minutes.

Caution: in case there is some paint overspray in the back side, it is critical to remove it (P320 sanding or clean with Scotch-Brite™ + 08984) before applying the adhesion promoter and the patch. Not removing paint overspray creates a weak link that may reduce patch adhesion.



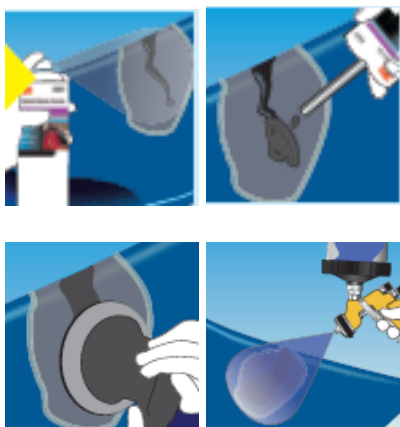
5. Patch Application

- Cut patch to size with scissors or a knife keeping 2 to 3cm around the crack or the hole.
- Remove the red liner.
- Apply to the repair area. Press firmly to get immediate adhesion.
- Excess of Patch on the edge can be cut with a knife.

Back side repair is completed.

6. Front side repair

- Finalize the repair on the front side as per the usual methods with 3M™ plastic repair material.
- For edge finishing, 3M™ 05888 Patch can be sanded when sanding the filler to achieve perfect appearance.
- Prime and paint as per your paint supplier recommendations.





Technical Data Sheet

Effective: 19/08/2020 Supersedes: 01/11/2005

5) Storage

Store in its original box between 5 C – 35 C in a dry area.

The patch has no shelf life, the adhesion promoter has a shelf life of 36 months after manufacture in the original sealed sachet.

6) Safety

Read full instructions and material safety data sheet before use.

IMPORTANT: This product (06396) contains hazardous materials and therefore appropriate personal protective equipment should always be used. Please refer to the label and consult the material safety data sheet for full handling instructions and personal protection information. These are available via your stockist. The supplier disclaims any liability where the user does not wear the recommended personal protective equipment.

3M™ 05888 Instant Plastic Repair Patch and 3M 06396 Patch Adhesion Promoter (Wipes) are designed FOR PROFESSIONAL INDUSTRIAL USE ONLY.

7) Disclaimer

All statements, technical information and recommendations are based on tests we believe to be reliable as at the date of hereof, but the accuracy or completeness thereof is not guaranteed. Please ensure before using the product that it is suitable for your intended use. Since the conditions and methods of use of the product and of the information referred to herein are beyond our control, other than for fraudulent misrepresentation, 3M expressly disclaims any and all liability as to any results obtained or arising from any use of the product or reliance on such information



Technical Data Sheet

Effective: 19/08/2020 Supersedes: 01/11/2005

For Additional Health and Safety Information

| | | |
|--|--|---|
| <p>3M United Kingdom plc Automotive Aftermarket 3M Centre, Cain Road, Bracknell, RG12 8HT Tel: +44 (0)161 237 6391 aadukenquiries@mmm.com www.3Mbodyshop.co.uk</p> | <p>3M Ireland Limited Automotive Aftermarket The Iveagh Building Carrickmines Park Carrickmines , Dublin 18 Tel: +353 12160301 aadukenquiries@mmm.com www.3Mbodyshop.co.uk</p> | <p>3M Denmark a/s Automotive Aftermarket Hannemanns Allé 53 2300 København S Tel: +45 43480100 aadukenquiries@mmm.com www.3MAuto.dk</p> |
| <p>3M Finland, Suomen 3M Oy Automotive Aftermarket Keilaranta 6 02150 Espoo Tel: 09 5252 1 aadukenquiries@mmm.com www.3M.fi/autotuotteet</p> | <p>3M Svenska AB Automotive Aftermarket Herrjärva torg 4 170 67 Solna Tel: 08-922100 aadukenquiries@mmm.com www.3M.se/bileftermarkad</p> | <p>3M Norge AS Automotive Aftermarket Kanalveien 2 2004 Lillestrøm Tel: 06384 aadukenquiries@mmm.com www.3m.no/auto</p> |
| <p>3M Latvija K.Ulmana 5 Riga, LV-1004 Tel: +371 67066120 aadukenquiries@mmm.com www.3m.lv</p> | <p>3M Eesti OU Pärnu mnt. 158 11317 Tallinn Tel: +372 6 115 902 aadukenquiries@mmm.com www.3m.ee</p> | <p>3M Lietuva A.Goštauto str. 40 A LT-01112 Vilnius Tel: +370 5 2160780 aadukenquiries@mmm.com www.3m.lt</p> |

© 3M 2020. 3M, Scotch-Brite and VHB are trademarks of the 3M company. All rights reserved